



PHOSIC

PRODUCT CATALOGUE

2025

Forensic and Crime Scene Investigation Products

At Phosic, we specialize in manufacturing and supplying products for forensic and crime scene investigations. Based in Goa, our company focuses on providing high-quality, Made-in-India kits and equipment for the forensic industry.

Our primary goal is to ensure that top-notch, scientific-grade forensic equipment is accessible to all law enforcement agencies across India.

Our products and kits are thoughtfully designed to meet a variety of needs and can be customized to align with your specific requirements.

Feel free to contact us to arrange a presentation or demonstration of our products at your department.



CONTENTS

CATEGORY	PAGE NUMBER
FORENSIC LIGHT SOURCES	4
FINGERPRINTING	9
MAGNIFIERS	17
FOOTPRINT AND OTHER IMPRESSION EVIDENCE	20
CRIME SCENE KITS	23
CRIME SCENE ESSENTIALS	38

FORENSIC LIGHT SOURCES

Lamps | Flashlights

LIGHT SOURCES



Forensic Blue LED Flash Light

Contents:

- 1 Blue LED Flash Light
- 1 Tri Stand
- 2 AAA Battery Cells
- 1 AAA Battery Charger

CRIME SCENE SEARCH LIGHT

Contents:

- 1 15 Watt Crime Scene Flashlight.
- White color, 6500 K
- 3 AAA Batteries.
- 1 AAA Battery Charger.



LIGHT SOURCES

PORTABLE UV TORCH TUBE



Contents:

- 1 UV A Torch Tube

WIDE ANGLE FOOTPRINT SEARCH LIGHT



Contents:

- 4 10W White LEDs.
- Rechargeable Battery with Charger.

LIGHT SOURCES

FORENSIC UV LIGHT SOURCE



Contents:

- 3W 365nm UVA Flashlight.
- Yellow Goggles.
- 2 Li-ion AAA batteries and charger.

CRIME SCENE ILLUMINATION KIT

Contents:

- 3 Torches - UV, Violet and Blue.
- Yellow and Orange Goggles.
- 1 AAA Battery Charger.



LIGHT SOURCES



ADVANCED CRIME SCENE ILLUMINATION KIT

Contents:

- UV, Violet, Blue, Cyan, Green, Amber, Red, IR and White Torches
- Yellow, Orange, Red and Transparent Goggles
- Viewing / Snap on Filter
- Diffuser (optional)
- 9 Li-ion Rechargeable Batteries
- A.C. and D.C. / Vehicle / USB Charger
- Tripod
- Plastic Molded Carrying Case with pre cut foam inserts



FINGERPRINTING

Tapes | Inks | Rollers | Pads

FINGERPRINTING



TRANSPARENT FINGERPRINT LIFTING TAPE

Available in:

1 inch, 2 inch, 3 inch formats.

Discover our transparent fingerprinting tapes, designed to lift fingerprints from various surfaces. Their high-quality adhesive prevents air bubbles, ensuring flawless evidence capture.

MAGNETIC FINGERPRINT APPLICATOR

- Narrow Head.
- Ejection by Magnetic metallic rod.



FINGERPRINTING



ROUND INKLESS FINGERPRINTING PAD

- Non Toxic, Black Ink
- Size: 1.625 inch diameter
- Print Capacity: 10,000 prints

RECTANGULAR INKLESS FINGERPRINTING PAD

- Non Toxic, Black Ink
- Size: 2.25"x1.76", 4"x6"
- Print Capacity: 10,000 prints



FINGERPRINTING

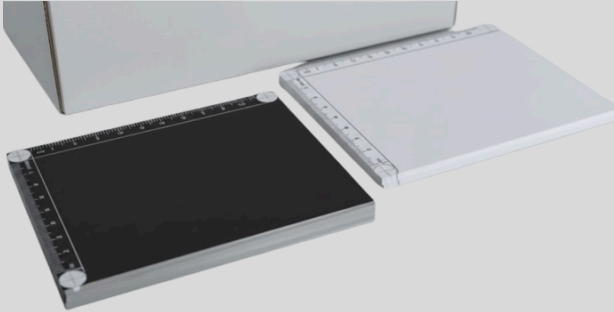
RECTANGULAR PALM PRINT PAD



- Fast, perfect and high contrast prints.
- Non Toxic, Black Ink
- Size: 4"x6"
- Print Capacity: 20,000 prints

FINGERPRINTING

FINGERPRINT BACKING CARDS



- Glossy Black and White sheet.
- High quality elastic rubber with adhesive layer on one side.
- Size: 4"x4", 6"x6".

FINGERPRINT GEL LIFTER SHEETS

- Simply peel and use.
- Transparent sheet with adhesive on one side.
- Size: 5"x7", 3"x5", A4



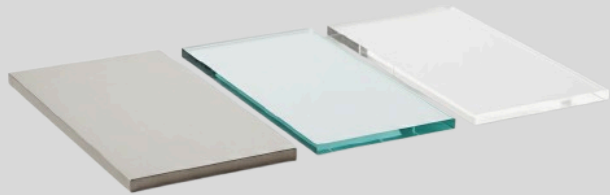
FINGERPRINTING

FINGERPRINT ROLLER



- Cylindrical and Concave Rollers.
- Medium-soft composition, to ensure even distribution of inks.
- Sizes:
Cylindrical: 2" and 4"
Concave: 2"

FINGERPRINT SLABS



- Steel, Glass and Acrylic Fingerprint Inking Slabs.
- Non-stick Rubber Base.
- Sizes:
Steel: 4"x10" and 5"x12"
Glass: 2"x3" and 4"x6"
Acrylic: 4"x10" and 5"x12"

FINGERPRINTING

FINGERPRINT RECORD SLIPS

FINGER PRINT SEARCH SLIP

Name Age

Father's Name / Husband's Name: Address :

RIGHT HAND

Thumb	Index	Middle	Ring	Little
<input type="text"/>	<input type="text"/>	<input type="text"/>	<input type="text"/>	<input type="text"/>

Fold

LEFT HAND

Thumb	Index	Middle	Ring	Little
<input type="text"/>	<input type="text"/>	<input type="text"/>	<input type="text"/>	<input type="text"/>

Fold

(LEFT HAND)	PLAIN PRINTS		(RIGHT HAND)
<input type="text"/>	Thumb	Thumb	<input type="text"/>

ALTERNATE PATTERNS

RT RI RM RR RL LT LI LM LR LL

MONTH & YEAR OF ARREST

IF TRACED, REGULAR CRML. NO.

CADAVER RIGHT HAND FINGERPRINT RECORD SLIP

R. Thumb	R. Index	R. Middle	R. Ring	R. Little
<input type="text"/>	<input type="text"/>	<input type="text"/>	<input type="text"/>	<input type="text"/>

CADAVER LEFT HAND FINGERPRINT RECORD SLIP

L. Thumb	L. Index	L. Middle	L. Ring	L. Little
<input type="text"/>	<input type="text"/>	<input type="text"/>	<input type="text"/>	<input type="text"/>

- Printed with Black ink on thick card sheets, making sure that the ink is quickly absorbed.
- Cards are available in two variants - General and Cadaver Fingerprinting Slips.
- Sizes:
 - General: A4.
 - Cadaver: 8"x 11/6".

FINGERPRINTING

PORTABLE FINGERPRINTING STATION



Contents:

- 1 - Finger Print Inkless Round Pad (2" Dia)
- 1 - Finger Print Inkless Rectangular Pad (4" X 6")
- 1 - Palm Print Inkless Rectangular Pad (6" X 8")
- 1 - Finger Print Search Slips (pack of 100)
- 1 - Finger Print Record Slips (pack of 100)
- 1 - Finger Print Ink Cleaning Towels (pack of 100)
- 1 - Portable foldable working station / table
- 1 - All in one carrying case

A close-up photograph of a forensic examination. A magnifying glass is held over a fingerprint card. The card has several sections labeled: 'left hand' on the left, 'thumb #2' at the top left, 'thumb #3' at the top right, and 'thumb #4' at the bottom right. Several fingerprints are visible, with two being magnified by the glass. A person wearing blue nitrile gloves is holding the handle of the magnifying glass. The word 'MAGNIFIERS' is overlaid in large white capital letters across the center of the image.

MAGNIFIERS

MAGNIFIERS

HANDHELD NON-ILLUMINATED MAGNIFIERS

A 10x non-illuminated magnifier with a wooden handle for ease of use in identification of evidence at a crime scene.



HANDHELD ILLUMINATED MAGNIFYING GLASS

Contents:

- 3 LED Light Magnifying Glass.
- 3 AAA Size Li-ion battery cells.
- AAA Battery Charger.



MAGNIFIERS

TABLETOP ILLUMINATED MAGNIFIER

- 10x Magnifier with 48 LEDs.
- Table-top attachment clamp.



HANDHELD ILLUMINATED 8X MAGNIFIER



Pocket sized, 8X Scaled
Illuminated Magnifier in a
plastic case.



FOOTPRINTS AND OTHER IMPRESSION EVIDENCES

Casting Frame | Lifters | Foams

FOOT IMPRESSIONS

FORENSIC FOOTPRINT CASTING FRAME

- Aluminium Frame with a wire mesh.
- Size: 14" x 8" x 2"



FOOTPRINT RESIDUE LIFTER



- Sensitive Acrylic Adhesive coated sheets ensure that even the tiniest particles are captured effectively.
- Available in Black Back and White Back options.
- Size: 6"x15"

FOOT IMPRESSIONS

FOOTPRINT IMPRESSION FOAM



- Closed-cell, Low-impression foam specially designed to collect shoeprint or footprint impression.
- Available in single slab or double slab packing.

CRIME SCENE KITS

A crime scene at night. In the background, a police car with flashing blue and red lights is parked on a dark road. In the foreground, a forensic investigator wearing a white protective suit, mask, and gloves is kneeling on the ground, collecting evidence into a clear plastic bag. Yellow evidence markers are visible on the ground. A yellow caution tape with the text "CRIME SCENE DO NOT CROSS" is stretched across the bottom of the frame. The scene is dimly lit, with the primary light sources being the police car's lights and the investigator's headlamp.

Investigation | Documentation |
Collection

CRIME SCENE KITS

CRIME SCENE CORDONING KIT



Contents:

- Crime Scene Cordoning Foldable Plastic Barrier Post with Metal Base Stand.
- Crime Scene Cordoning Barrier Tape with Rewinder.
- Rechargeable Flashers.
- Crime Scene Marking Flags.
- Crime Scene Marking Pyramid Markers (Alpha/Numeric)
- Crime Scene Marking Cones (Evidence)
- Flexi Carrying Bag

CRIME SCENE PHOTOGRAPHY KIT



Contents:

- UV, Violet, Blue, Green, Red and White Flashlights.
- Anti-UV, Yellow and Orange Goggles.
- 2 mtr Wooden Folding Scale.
- Adhesive ABFO Scales.
- Rigid Photography Scales (Black, Grey and White)
- Photography Log Book.
- Crime Scene Evidence Markers
- AAA Battery Charger.

CRIME SCENE KITS

CRIME SCENE EVIDENCE COLLECTION KIT



Contents:

- 3 Mtr Tape Measure
- Rechargeable White LED Flashlight
- Roll of Evidence Sealing Tape
- Chain of Custody Labels
- Bio Hazard Labels
- Set of Pre Printed Write Block Zip-Top Evidence Bags 4"x 6", 6"x10" & 9"x12"
- Set of Pre Printed Evidence Envelope 5"x 7", 6"x9" & 9"x12"
- Set of Pre Printed Kraft Evidence Bags 5"x 3"x9", 7"x4"x13" & 8"x5"x18"
- Set of Pre Printed Evidence Box 10"x 6"x4", 18"x14"x14" & 13"x10"x05"
- Set of Pre Printed Leak Proof Specimen Bags 4"x 6", 6"x10" & 9"x12"
- Set of Bio Hazard Bags 8"x 12"
- Set of Fire Tin for Bullet Small & Big
- Collection Tubes with EDTA
- Disposable Syringes
- Amber & Transparent Plastic Jars with Caps
- Plastic Containers with Cap
- Set of Thread, Needle, Sealing Wax & Cloth
- Set of Candle, Match Box
- Ultraviolet Light with Batteries
- Multi Tool (21 Function)
- 3" Dia Round Magnifying Glass

CRIME SCENE KITS

BLOOD DETECTION KIT



Contents:

- Disposable Pipette with 3 ml Bulb
- Contact Filter Papers 1" X 2", 100 nos
- Whatman Filter Paper No 1, Size 125mm Disc
- Blood Stain Detection Reagent Set (Benzidine Process)
- Blood Stain Detection Tablets - DNA Safe (Bluestar)
- Blood Stain Detection Tablets - Normal (Bluestar)
- Blood Origin Identification Strip (Hexagon OBTI)
- Blood Stain Evidence Template (pack of 24)
- Bottle of Distilled water 125 ml in Aerosol Sprayer
- Blood Collection EDTA Tubes
- Glass Vials
- Cotton Balls
- Cotton Gauze Small Roll
- Pricking Needles, 100 nos
- Microscopic Plain Glass Slides
- VDRL Slide, 3 Cavity
- Watchglass, 3" Dia, 20 nos
- Scissors - Stainless Steel, 6"
- Forceps - Stainless Steel, 6"
- Spatula - Stainless Steel, 6"
- Latex Gloves
- Nitrile Gloves
- Cotton Gloves
- Rubber Hand Gloves
- Evidence Identification labels

CRIME SCENE KITS

SEXUAL ASSAULT EVIDENCE COLLECTION KIT



Contents:

• Gloves	3 Pairs	• Ampule of Saline Water	2 Nos.
• Face Mask	3 Nos.	• Ampule of Phosphate Buffer	2 Nos.
• Disposable Gown	3 Nos.	• EDTA vial	1 No.
• Surgical Cap	3 Nos.	• FTA Card	2 Nos.
• Shoe Cover	3 Nos.	• Surface Swab	4 Nos.
• Hand Towel	3 Nos.	• Cotton Swab	5 Nos.
• Bio Hazard Disposable Bag	3 Nos.	• Sterile Plastic Container	3 Nos.
• Sterile Gauge	3 Nos.	• Evidence Collection Kraft Bag(A3)	2 Nos.
• Filter Paper	5 Nos.	• Evidence Collection Envelope(A4)	5 Nos.
• Alcohol Swab	4 Nos.	• Evidence Collection Envelope(A5)	5 Nos.
• Hand Sanitizer	1 No.	• Butter Paper Sheet(9x12)	5 Nos.
• Forensic Magnifier Lens	1 No.	• Sticker Sheet A4	1 No.
• Surgical Blade	1 No.	• Temper Proof Tape	5 No.
• Forceps	1 No.	• Spatula	1 No.
• Scissors	1 No.	• 12" Scale	1 No.
• Pasteur Pipette / Dropper	2 Nos.	• 5' / 3 Mtr Measuring Scale	1 No.
• Syringe	2 Nos.	• Comb	2 Nos.
• Ampule of Sterile Water	2 Nos.	• Nail Cutter	1 No.

CRIME SCENE KITS

FORENSIC DOCUMENT IDENTIFICATION KIT

Contents:

- 3 Torches - 256nm, 265nm and 313nm.
- Anti UV Goggles.
- AAA Battery Charger.



Specifications:

WAVELENGTH	BANDWIDTH	APPLICATION
256 nm	256 - 260 nm	Highlight Security features, Suspect forgeries.
265 nm	265 - 270 nm	Differences in inks and alterations in document.
313 nm	310 - 320 nm	Detection of security features in document.

CRIME SCENE KITS

INVESTIGATING OFFICER ASSISTANCE KIT



Contents:

- Illuminated Magnifier
- Ratchet Screwdriver Set with Assorted Heads
- Set of Forceps
- Dust Mask, Shoe & Head Cover
- Heavy Duty Pliers
- Small Hammer
- Crime Scene Barrier Tape with Rewinder 50 mtr
- Crime Scene Barrier Post with Metal Stand
- Crime Scene Flasher
- Body Bags (Brown / Black)
- Chalk & Powder for Marking (White & Yellow)
- Crime Scene Marking Spray (Red & Yellow)
- Clipboard, Drawing Sheets (Pack of 20)
- Set of Drawing Instruments
- Crime Scene Sketch Template (Set of Fingerprint, Traffic, House Plan, Crime Scene & Human Figure)
- Scissor with plastic handle, two sizes.
- Lock & Adhesive Paper Seal (100 Pieces each)
- Swiss Knife (21 Blade)
- Evidence Flags (Set of 10)
- Evidence Numbers 1 to 10 and A to Z
- Assorted Evidence Zipper Bags - 3 different sizes
- Evidence collection lifters (having 10 piece each)
- Vials with paper adhesive (100ml & 50 ml vials)
- Disposable Latex Gloves
- Plastic Container with Cap (assorted sizes)
- Torch (Chargeable) with 3 Volt LED
- Measurement Tape (15 Mtr.)
- Direction Compass

CRIME SCENE KITS

ARSON INVESTIGATION KIT



Contents:

- Heavy-Duty Sledge - Mallet - 01 No
- Hammerhead Hatchet - 01 No
- Collapsible - Folding Steel Shovel - 01 No
- Heavy-Duty Rubber Gloves, Pair - 01 No
- Pair of Safety Goggles - 01 No
- Disposable Jumpsuits - 01 No
- 5" Wire Cutter Pliers - 01 No
- 8" Scraper/Putty Knife - 01 No
- 11" Screwdriver - 01 No
- 7" Screwdriver - 01 No
- 8" Phillips Screwdriver - 01 No
- Claw Hammer - 01 No
- Small All-Purpose Hack Saw - 01 No
- Rechargeable Drill machine with assorted bits - 01 No.
- Heavy-Duty Masonry Chisel - 01 No
- Wood Chisel - 01 No
- 6" Regular Pliers - 01 No
- Blade Trowel - 01 No

CRIME SCENE KITS

DNA EVIDENCE COLLECTION KIT



Contents:

- Mini FTA Cards (2 Source)
- Swabs with protected cover
- Nitrile Gloves
- Masks
- EDTA vials
- Urine vials
- Paper Bags (Big & Small)
- Small paper Envelops
- Cotton gauze
- Cotton Balls
- Markers
- Wooden Nail Scrubber
- Scissors
- Plastic Tweezers
- Glass Slide With protected cover
- Distilled Water 10 ml
- Chain of Custody Labels
- Pubic Hair Combs
- Soft Brush
- Syringe 02 ml
- Syringe 05 ml
- Wooden Spatula
- Anal Speculum (For juvenile and Adults)
- Vaginal Speculum (For juvenile and Adults)
- Sterile swabs
- Swab Drying Rack

CRIME SCENE KITS

SEMEN DETECTION KIT



Contents:

- Disposable Pipette with 3 ml Bulb
- Contact Filter Papers 1" X 2", 100 nos
- Bottle of Distilled Water 125 ml
- Spot Test Cards of Acid Phosphatase Test
- Spot Test Cards of PSA
- Semen Stain Detection Light Source with Goggle
- Spray Unit
- Glass Vials
- Cotton Balls
- Cotton Gauze Small Roll
- Pricking Needles, 100 nos
- Microscopic Plain Glass Slides
- VDRL Slide, 3 Cavity
- Watchglass, 3" Dia, 20 nos
- Scissors – Stainless Steel, 6"
- Forceps – Stainless Steel, 6"
- Spatula – Stainless Steel, 6"
- Latex Gloves
- Nitrile Gloves
- Cotton Gloves
- Rubber Hand Gloves
- Evidence Identification labels.

CRIME SCENE KITS

FOOTPRINT INVESTIGATION KIT



Contents:

- Rechargeable Foot Print Search Light
- Electrostatic Dust Print Lifting Device
- Static Discharge Cable
- Film Roll - 20" wide
- Ground Plane, Steel 4"x6"
- Ground Plane Insulated Sheet 5"x7"
- Heavy Duty Rubber Gloves
- Plastic Handle Scissor
- Wooden Handle Roller
- Photographic Folding Scale 2Mtr
- Pack of Rigid Photo Adhesive Scales
- Evidence Storage Boxes
- Foot Print Lifters 6" x 15" (Black)
- Foot Print Lifters 6" x 15" (White)
- Evidence Labels Silver/Black

CRIME SCENE KITS

CRIME SCENE SKETCHING KIT



Contents:

- Clipboard with Drafter
- Graduated Removable Straight Edge
- Drafting Half Protractor
- Drafting Full Protractor
- Set Square
- Divider
- Bow Compass
- Drafting Set of Pencil
- Pack of Sketching Paper
- Supply Storage pouch
- Finger Print Template
- Traffic Accident Template
- House Furnishing Template
- Office Plan Template
- Crime Scene Template
- Human Figure Template
- Photo Evidence Numbers, 0 - 9
- Folding Photo Evidence Ruler
- Photo Numbers Booklet
- Roll of L Shape Adhesive Scale
- Vinyl Scale Set
- Small Rigid Adhesive Photo Scale Set
- Measuring Tape
- Magnetic Compass
- Digital Distance Measuring Device
- 5 mtr Steel Retractable Measuring Tape
- 100ft / 30 mtr Retractable Measuring Tape
- Steel Scale

CRIME SCENE KITS

FOOT AND TIRE PRINT CASTING KIT



Contents:

- Foot Print Frame Aluminum 14" x 6" x 2"
- Dirt Hardener 200 ml
- Flexible Mixing Bowl (dish) Different Sizes 3 Nos
- Spatula Steel
- Mixing Spoon Steel
- Measurement Tape Small
- Evidence Tag Pre Printed (Pack of 50)
- Wire Gauge 4" x10" (Pack of 20)
- Casting Material 2.5 Kg Top Grade
- Aerosol Sparer Plastic
- Water Can 1 Ltr
- Silicon Spray One Bottle
- Disposable Pipettes Pack of 12
- Spray to Mark Evidence Area One Bottle
- Surface Brush Normal
- Molding Clay 50 gm
- Molded Carrying Case

CRIME SCENE KITS

FORENSIC DOCUMENT EXAMINATION KIT



Contents:

- Handheld Magnifiers (3x, 5x, 10x)
- High Intensity Oblique White LED Flashlight.
- High Intensity UV A Flashlight.
- High Intensity UV C Flashlight.
- Handheld UV LED Tube Light.
- Transparent Metric Rulers.
- Transparent Protractor.
- Typewriter/Printer Grids.
- Notepads.
- Multicolor Pens.
- Permanent Markers.
- Non-metallic tweezers.
- Evidence Tags.
- Evidence Collection Bags.

The background of the page is a close-up, slightly blurred image of yellow crime scene tape. The tape has black text printed on it, including the words 'CRIME SCENE' and 'POLICE' in a bold, sans-serif font. The tape is strung across the frame, creating a sense of depth and focus on the central text.

CRIME SCENE ESSENTIALS

CRIME SCENE ESSENTIALS

CRIME SCENE CORDONING TAPE



One Roll of, 3 inch, 200 m long "Crime Scene Do Not Cross" Adhesive Tape

CRIME SCENE EVIDENCE MARKERS



30 Acrylic, Sturdy built Pyramid shaped Crime Scene Evidence markers, numbered from 1 to 30.

CRIME SCENE ESSENTIALS

EVIDENCE COLLECTION BAGS



- Heavy duty, Brown paper bags.
- Three different sizes: Small, Medium, Large
- Pre printed Chain of Custody Form.

CRIME SCENE EVIDENCE LABELS

- Adhesive Crime Scene Labels
- Size: 4"x6"

EVIDENCE	
Agency: _____	
Item No.: _____	Case No.: _____
Date of Collection: _____	Time of Collection: _____
Collected By: _____	
Description of Evidence: _____	

Location of Collection: _____	

Type of Offense: _____	
Victim: _____	
Suspect: _____	
CHAIN OF CUSTODY	
Received From: _____	By: _____
Date: _____	Time: _____
Received From: _____	By: _____
Date: _____	Time: _____
Received From: _____	By: _____
Date: _____	Time: _____

CRIME SCENE ESSENTIALS

EVIDENCE TAGS

EVIDENCE

CASE NO. _____ ITEM NO. _____

DATE _____ TIME _____ AM/PM

PLACE _____

REMARKS _____

OFFICER/TECH _____

Part #CSI-2X2

- Adhesive Crime Scene Evidence Tags.
- Size: 2"x2"

CRIME SCENE EVIDENCE COLLECTION BOX



- Cardboard box for storage of evidence.
- Sizes: Small, Medium and Large.

CRIME SCENE ESSENTIALS

STERILE DNA COLLECTION SWABS



- Human-DNA Free Swabs.
- Stick is made with Polysterene and the Swab is made with Polyester.
- Swabs are packaged in Polypropylene transparent tubes with tags.

BLOOD SAMPLE COLLECTION TUBES

- PVC, EDTA Grade Blood Sample Collection Tubes.
- Capacity: 2 ml to 10 ml.
- Pack of 100



CRIME SCENE ESSENTIALS

URINE SAMPLE COLLECTION CONTAINER



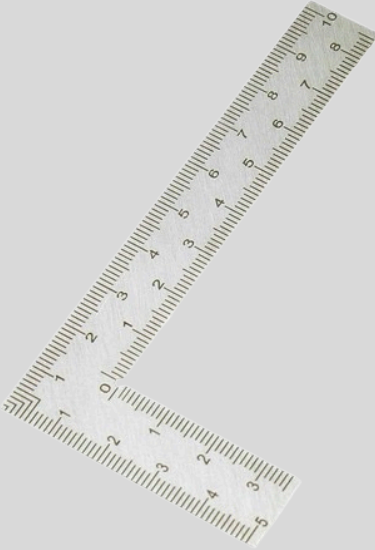
- Sterile, Plastic Containers.
- Capacity: 50ml

ADHESIVE MEASURING TAPES



- Single sided Adhesive Tape.
- Length: 1.5m/60inch, 60cm,30cm

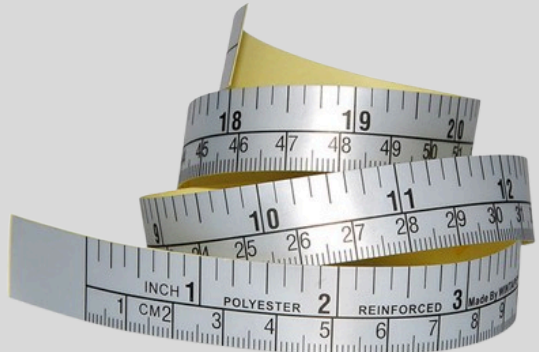
CRIME SCENE ESSENTIALS



L SHAPED RULER

- Metallic, L-shaped, Non-adhesive ruler.

ADHESIVE MEASURING TAPES



- Single sided Adhesive Tape.
- Length: 1.5m/60inch, 60cm,30cm



Thank you for taking the time to browse our catalog. Our goal is to provide high-quality forensic equipment to clients all across India.

PHOSIC INDIA PRIVATE LIMITED

Ponda , South Goa 403401.

Contact: +91 9145977062

www.phosic.com